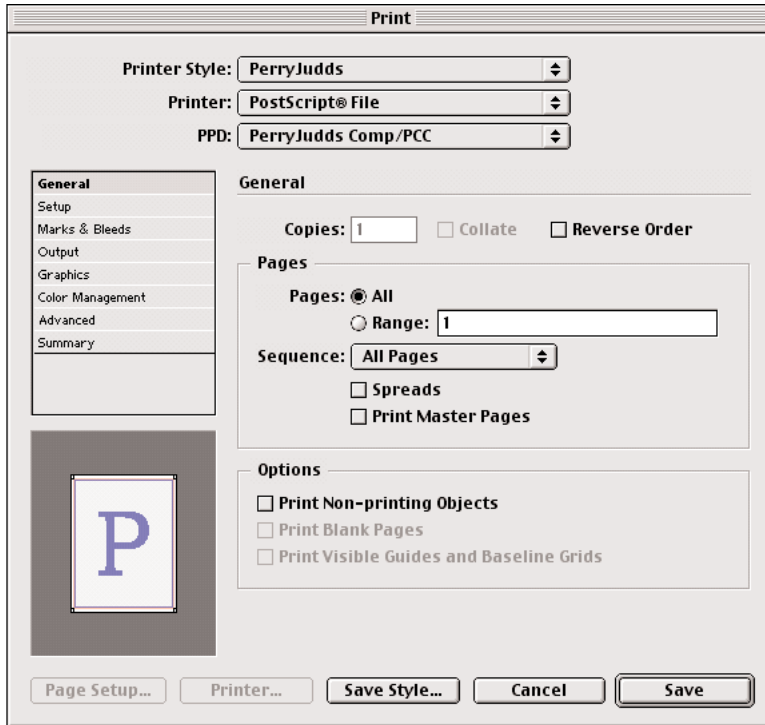


Printing Fat Postscript from Indesign 2.02

Disclaimer: These recommendations are given using the best knowledge that we have at this time. These are settings that have worked for our customers in the past given their particular file formats. These recommendations are not intended to cover all possible combinations of file formats.

Following are print settings for COMPOSITE FAT POSTSCRIPT:

General Preference

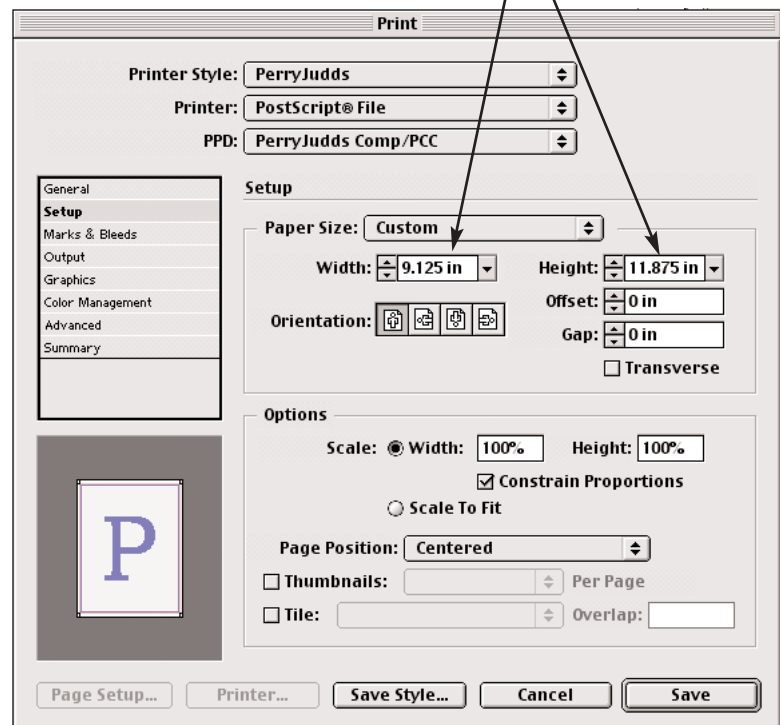


Rules:

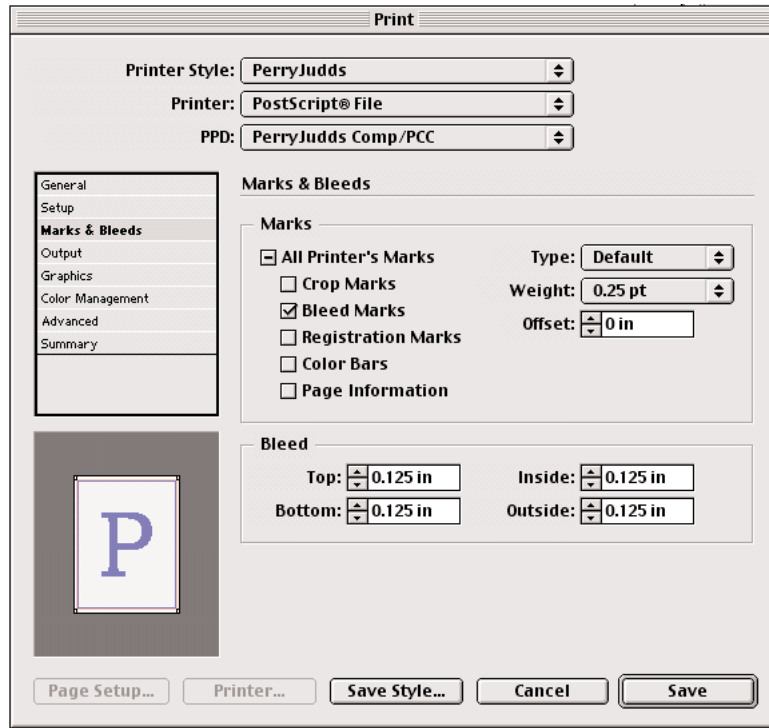
- Print single pages
- Indesign 2.02

Add 1" to your document's width and height

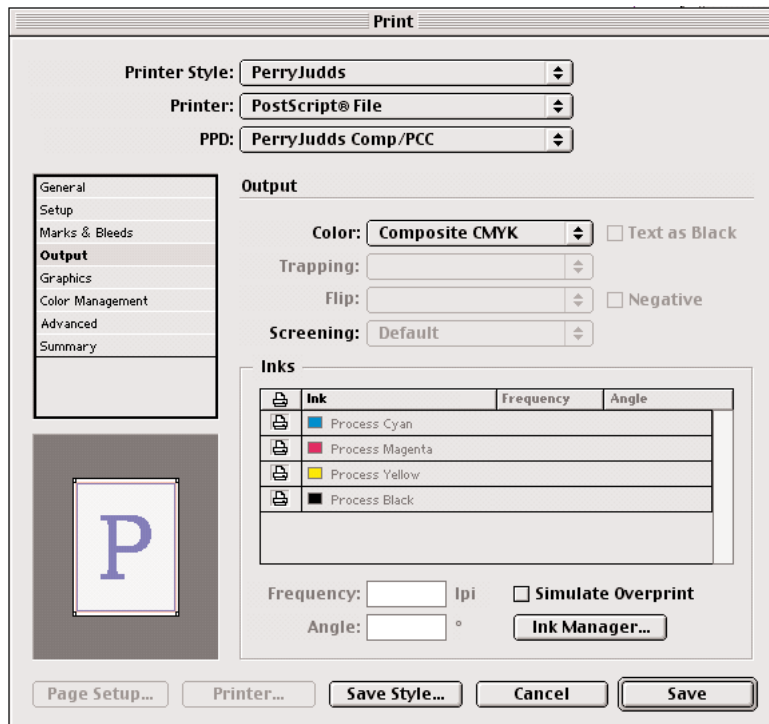
Setup Preference



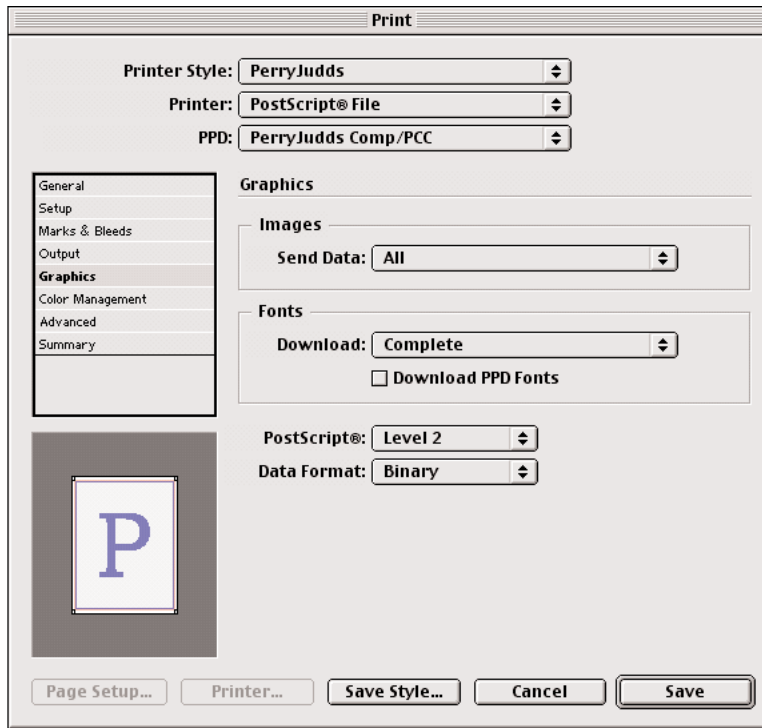
Marks & Bleeds Preference



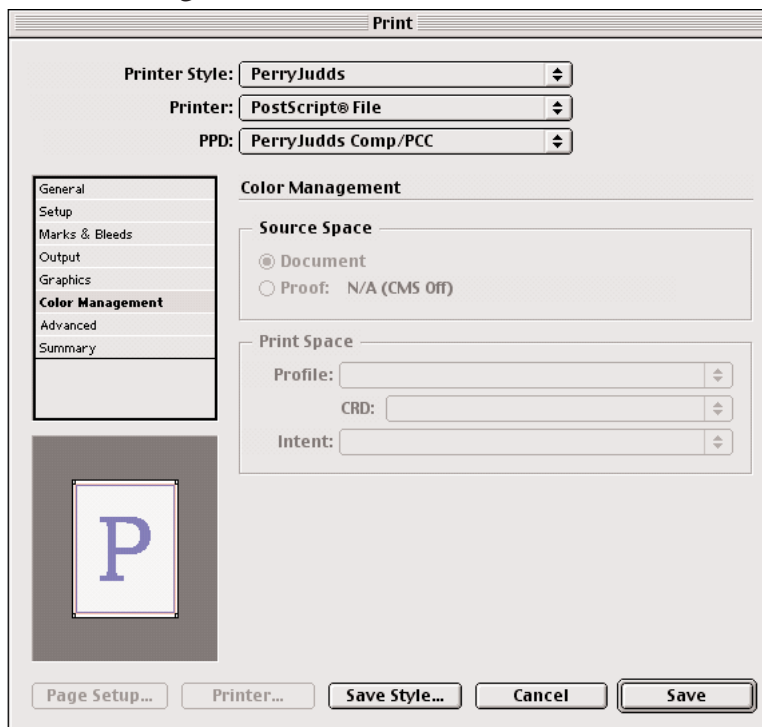
Output Preference



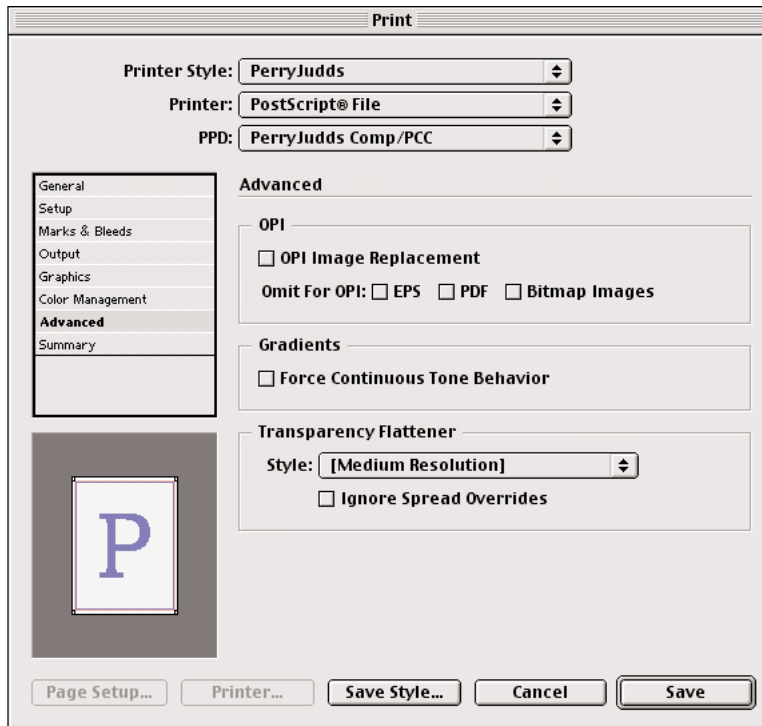
Graphics Preference



Color Management Preference



Advanced Preference



Confirm Settings then select save, name your file and select where to save it to.